




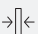


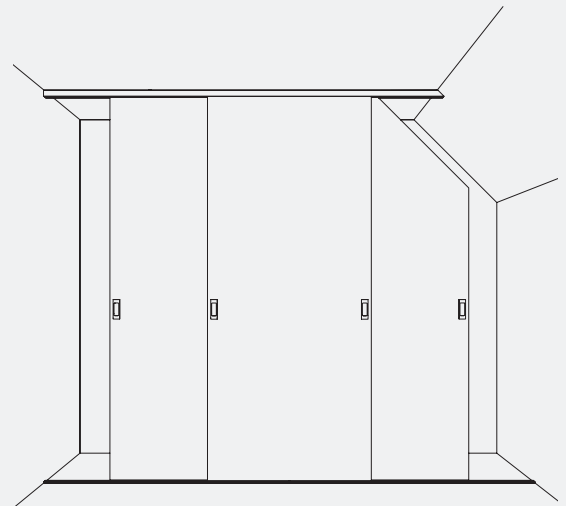
Fitting for bottom-running wooden doors up to 80 kg (176 lbs.), with surface or recess mounted running track. System for sloping ceilings.

Product highlights

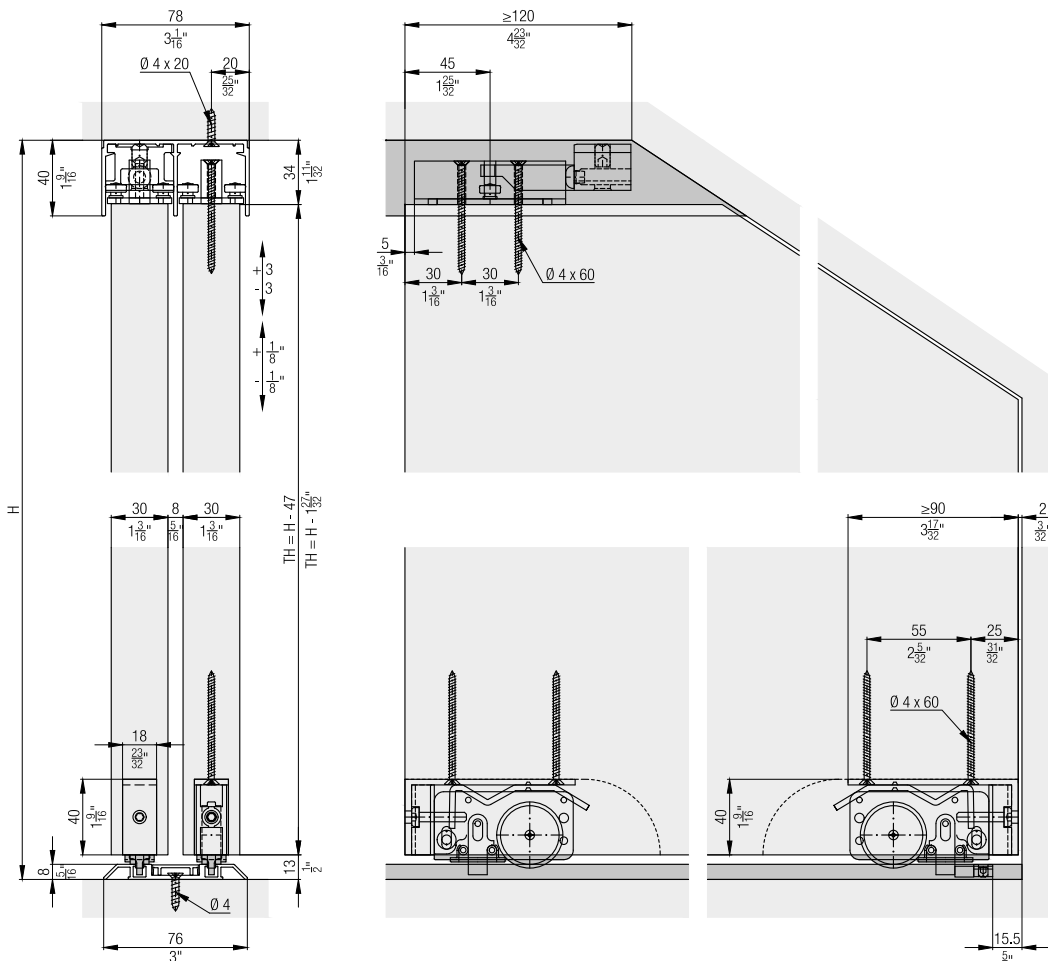
-  **Flexibility** Two track systems can also be implemented in sloping ceilings as room dividers
-  **Comfort** Smooth running thanks to high-quality ball bearings

Technical specifications

-  Max. 80 kg (176 lbs.)
-  Max. 2400 mm (7' 10 7/16")
-  Max. 2000 mm (6' 6 3/4")
-  28–30 mm (1 3/32" to 1 3/16")



Installation examples



Set for 1 wooden door up to 80 kg (176 lbs.)

	No.
Hawa Divido 80 H, for 1 door	042.3026.075


	042.3026.075	No.
Set consisting of:		

	Running gear, bottom running, steel	2	042.3018.071
	Adapter for wooden door, plastic, anthracite	2	042.3036.001
	Flat countersunk head chipboard screw, 4x60 mm (5/32"x2 3/8"), steel, zinc-plated	4	600.0000.139
	Stopper to running track Hawa Divido 80, plastic, grey	2	042.3008.071
	Soft closing gum, plastic, grey	2	042.0126.001
	Track end piece, plastic, grey	1	042.3046.001
	Set top guide	1	042.3032.172
	Stopper to guide track, plastic, grey	2	042.3012.071



Running tracks (overview on page 535)

		mm (inch)	No.
	Running track, aluminum, anodized, flush mounted	6,000 (19' 8 7/32")	042.3089.600
		cut to size	042.3089.990
	Single running track for 042.3039., aluminum, anodized	2,500 (8' 2 7/16")	042.3037.250
		3,500 (11' 5 25/32")	042.3037.350
		6,000 (19' 8 7/32")	042.3037.600
		cut to size	042.3037.990
	Mounting track for 042.3037., aluminum, anodized	6,000 (19' 8 7/32")	042.3039.600
		cut to size	042.3039.990
	Single running track, aluminum, anodized, surface mounted	6,000 (19' 8 7/32")	042.3040.600
		cut to size	042.3040.990
	Double running track, aluminum, anodized, pre-drilled, surface mounted	6,000 (19' 8 7/32")	042.3041.600
		cut to size	042.3041.990
	Single running track, for glue fixing, aluminum, anodized, surface mounted	6,000 (19' 8 7/32")	042.3080.600
		cut to size	042.3080.990
	Double running track, aluminum, anodized, pre-drilled, surface mounted	6,000 (19' 8 7/32")	042.3081.600
		cut to size	042.3081.990
	Clip cover for 042.3039./042.3041./042.3081./042.3082., aluminum, anodized	6,000 (19' 8 7/32")	042.3038.600
		cut to size	042.3038.990

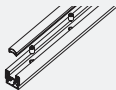
Track end piece set for single running tracks

	No.
	Track-end piece to 042.3089., plastic, grey, 2-piece set 042.3090.081

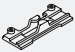
Guide tracks

		mm (inch)	No.
	Single guide track, aluminum, anodized	2,500 (8' 2 7/16")	042.3049.250
		3,500 (11' 5 25/32")	042.3049.350
		6,000 (19' 8 7/32")	042.3049.600
		cut to size	042.3049.990
	Double guide track, aluminum, anodized, flush mounting	2,500 (8' 2 7/16")	042.3011.250
		3,500 (11' 5 25/32")	042.3011.350
		6,000 (19' 8 7/32")	042.3011.600
		cut to size	042.3011.990

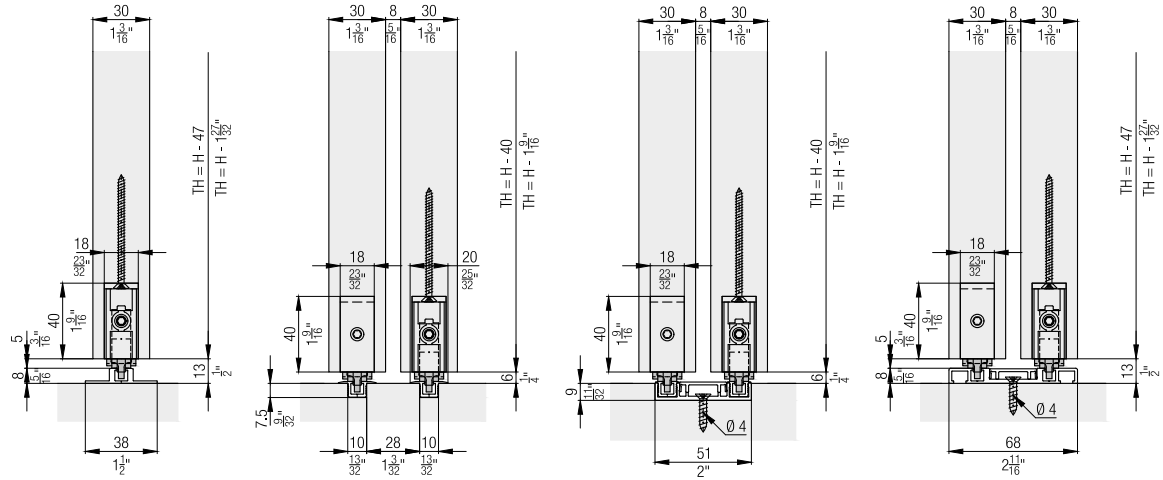
Wall compensation profiles

		mm (inch)	No.
	Wall compensation profile, with sealing profile gray, aluminum, anodized	2,500 (8' 2 7/16")	042.3064.071
		3,000 (9' 10 1/8 ")	042.3064.072

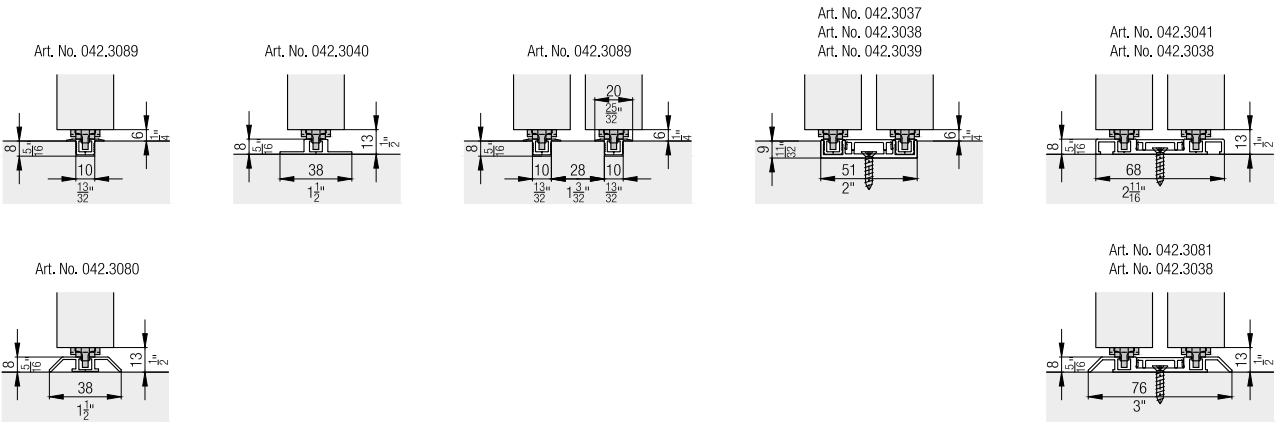
**Intermediate stop
(cannot be used in conjunction with
soft closing mechanism)**

		No.
	Intermediate stop, plastic, gray	042.3031.071

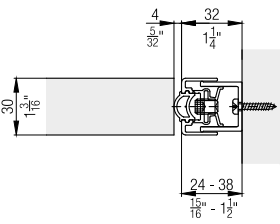
Installation examples running tracks



Overview running tracks



Wall compensation profile



Accessories

– Hawa Divido overview from page 535

Planning/execution

Further information about the product can be found on www.hawa.com.